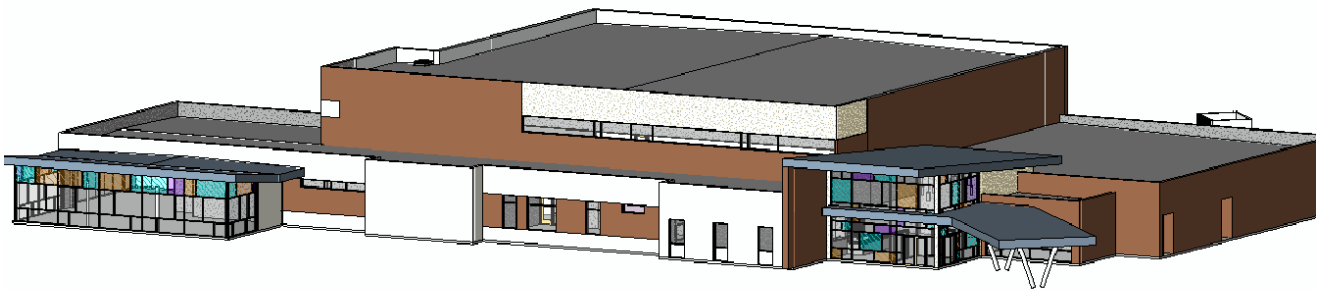


Crowley Community Center



Location:	<i>Crowley, Texas</i>
Construction Cost:	<i>\$5.2 million</i>
Year Complete:	<i>Anticipated Spring 2011</i>
Architect:	<i>GSBS Architects</i>
Project Size:	<i>Approximately 35,000 Square Feet</i>

Project Description:

Solare Engineering provided mechanical, electrical, and plumbing engineering as well as fire protection design services for the construction of a new Crowley Community Center facility. The building was designed using BIM techniques and Autodesk Revit software. It includes a gym housing multiple basketball court, an elevated running track, and several focus rooms for independent workout activities.